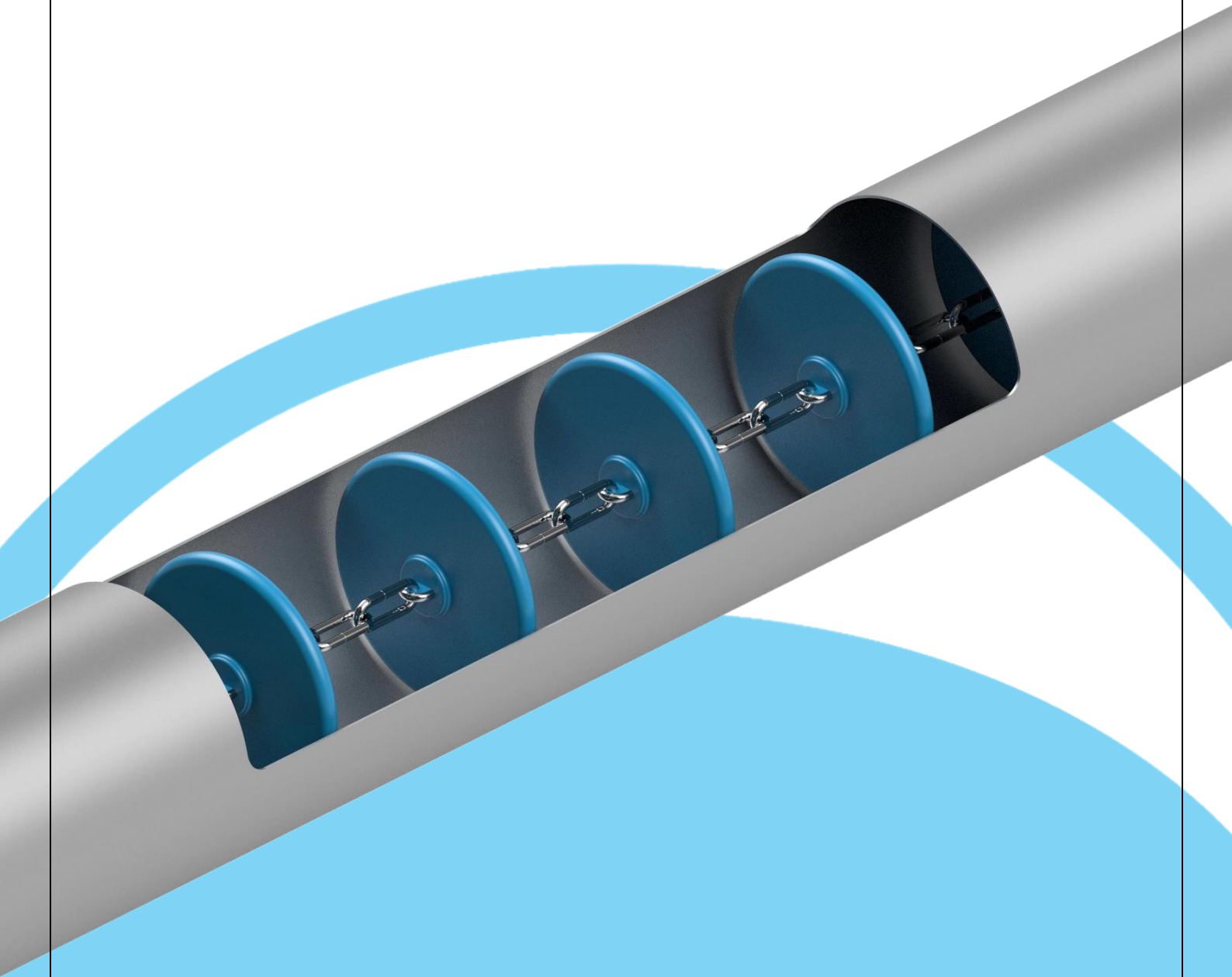
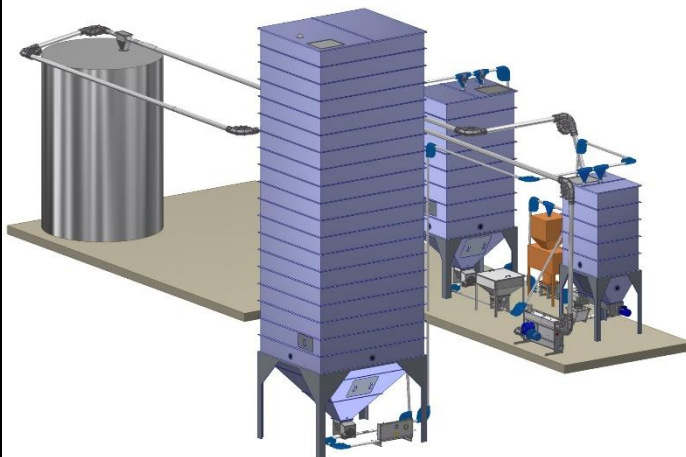
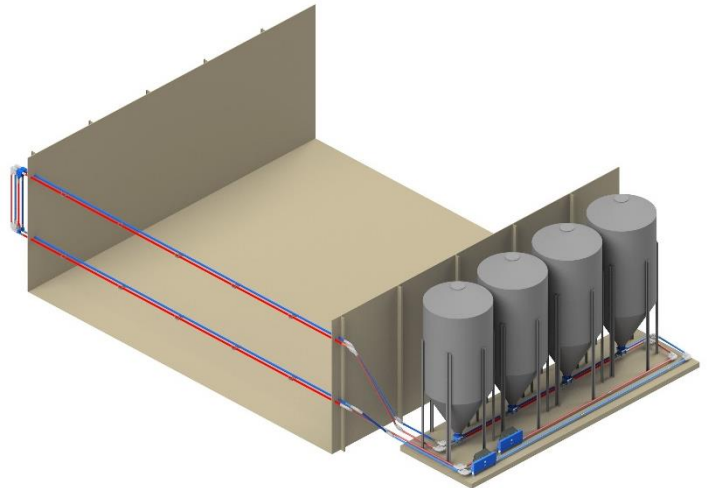
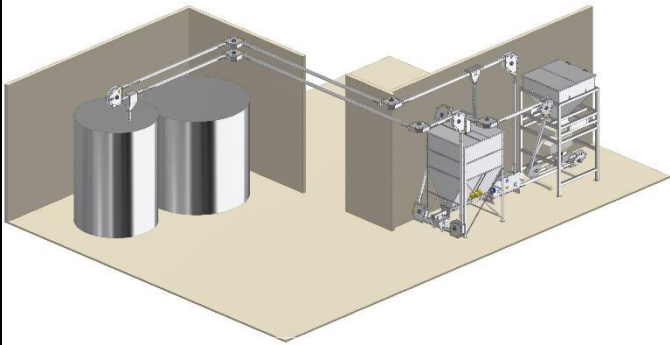
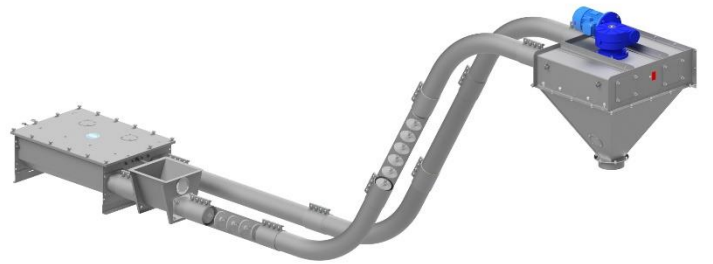
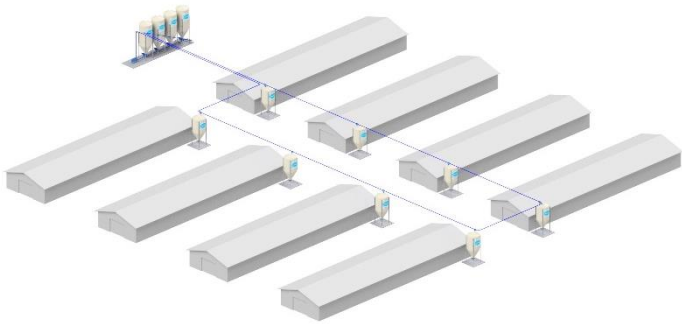
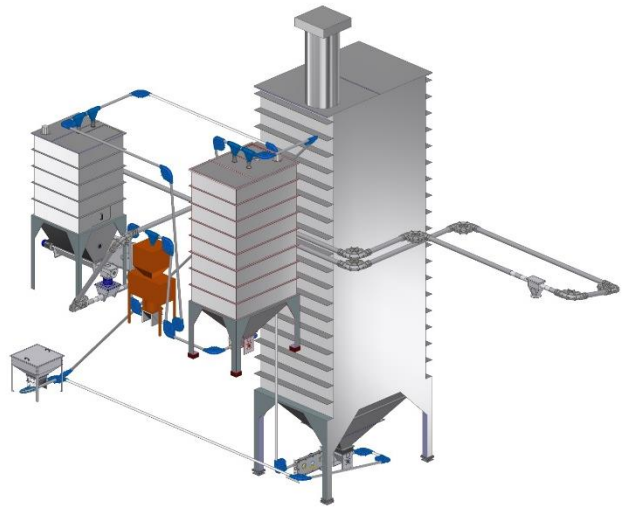
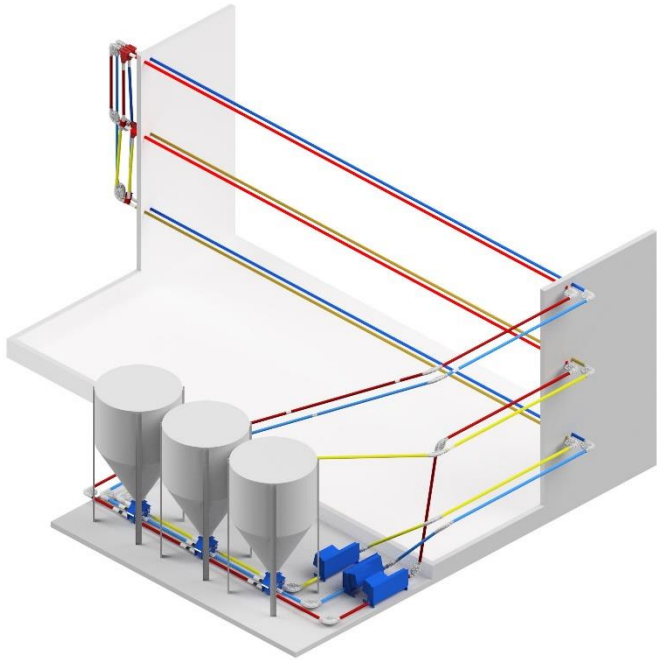
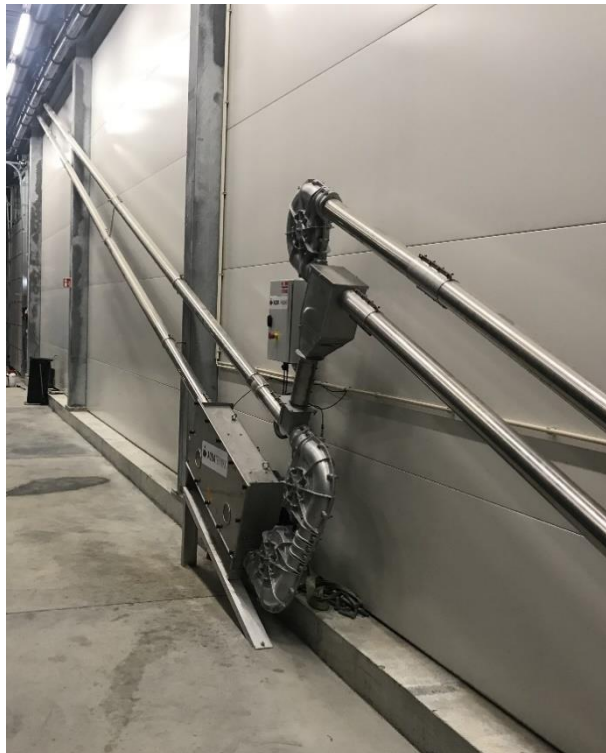


Tubular drag conveyors



FALCON





INDUSTRIAL SECTORS



Animal Husbandry Industry



Agricultural Industry



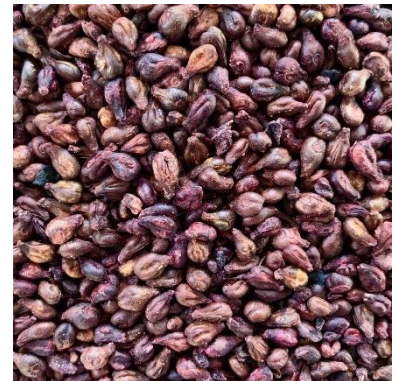
Pet Food Industry



Food Industry



Breweries



Distilleries



Coffee Industry



Chemical Industry



Wood Industry



Plastics Industry

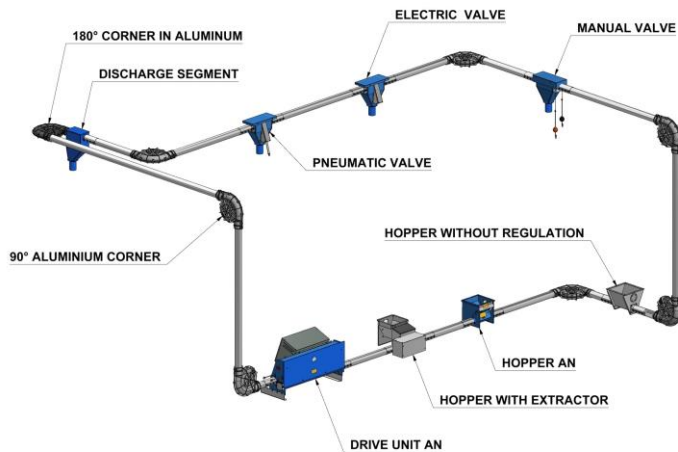


Recycling Industry



Tobacco Industry

Long-distance Conveyors

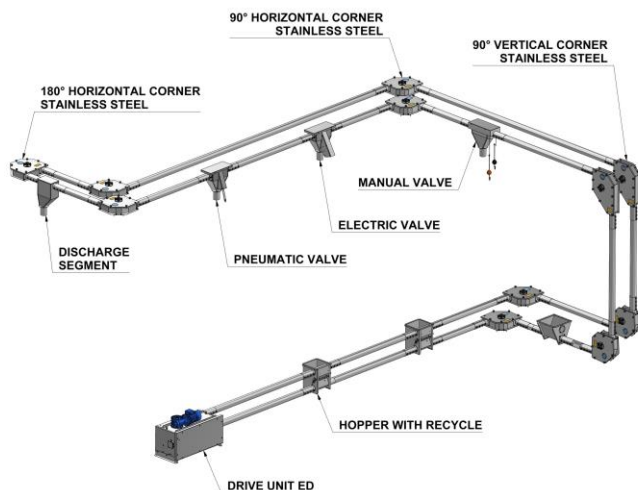
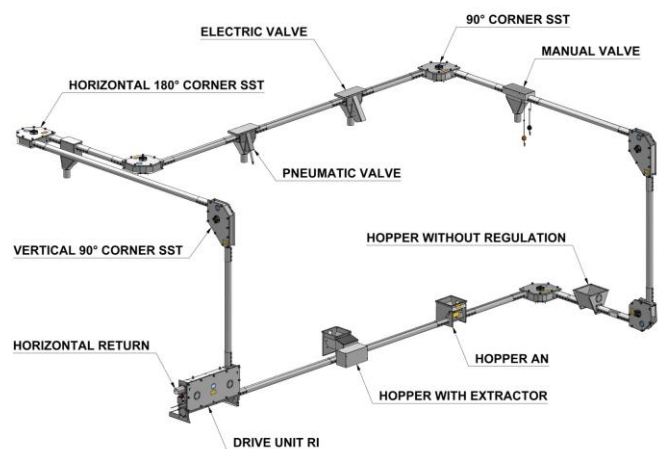


AN MODEL

The drive units have a horizontal entrance pipe and an integrated tensioner unit. Drive units, hoppers, and discharge valves are available in galvanized iron or stainless steel; the corners are available with aluminum or nylon housing.

RI MODEL

The drive units can be assembled as either right- or left-hand and feature an entrance pipe, available in either a horizontal or vertical configuration, with an integrated tensioner. The drive unit, along with the corners, hoppers, and discharge valves, is made of AISI 304 and AISI 316 SST. An ATEX version and one suitable for food contact are also available.



ED MODEL

The drive units have parallel pipes and an integrated tensioner unit. Drive units, corners, hoppers, and discharge valves are available in AISI 304 and AISI 316 SST. An ATEX version and one suitable for food contact are also available.

Model	Capacity	Length	Power
Ø	M3/h	Metri	Kw
60	3	400	1,5
102	8	300	3
114	12	280	4
154	30	140	5,5

Advantages:

- Thanks to the flexibility of the chain, they can be used for long and winding paths.
- Suitable for circuits with numerous changes in direction and a single drive unit.
- Extremely low energy consumption.
- No dust dispersion in the environment.
- Very low maintenance costs thanks to small periodic interventions.

DRIVE UNITS AND COVERS

Drive Units model AN with Direct Drive Transmission



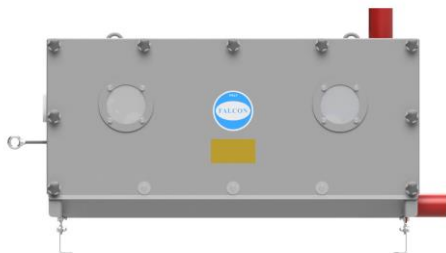
Code	DRIVE UNITS model AN60
602673	Drive unit AN601 HP1 blue, food-grade
602665	Drive unit AN602 HP1,5 blue, food-grade
602674	Drive unit AN602 HP2 blue, food-grade
602126	Drive unit AN601 HP1 SST food-grade
602450	Drive unit AN601 HP1,5 SST food-grade
602451	Drive unit AN601 HP2 SST food-grade
	DRIVE UNITS model AN60 2021 (Direct spring and resettable switches)
602698	Drive unit AN601-2021 HP1 blue, food-grade
602699	Drive unit AN601-2021 HP1,5 blue, food-grade
602704	Drive unit AN601-2021 HP2 blue, food-grade
602701	Drive unit AN601-2021 HP1 SST food-grade
602702	Drive unit AN601-2021 HP1 SST food-grade
602703	Drive unit AN601-2021 HP1 SST food-grade
	DRIVE UNITS model AN102/11
1022676D	Drive unit AN102/11 HP2 blue, food-grade Right
1022676S	Drive unit AN102/11 HP2 blue, food-grade Left
1022679D	Drive unit AN103/11 HP3 blue, food-grade Right
1022679S	Drive unit AN103/11 HP3 blue, food-grade Left

Drive Units model RI

HORIZONTAL RETURN

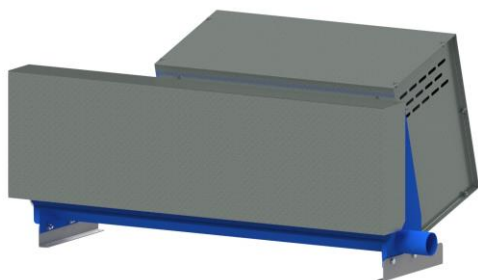


VERTICAL RETURN



Code	GRUPPI TRAINO mod RI60 - disco Ø 46
602386D	Drive unit RI60 PN-PN HP1,5 Right SST
602386S	Drive unit RI60 PN-PN HP1,5 Left SST
602075D	Drive unit RI60 PN HP2 Right SST
602075S	Drive unit RI60 PN HP2 Left SST
602570D	Drive unit RI60 PI HP2 Right SST
602570S	Drive unit RI60 PI HP2 Left SST
GRUPPI TRAINO mod RI60 - disco Ø 52	
602495D	Drive unit RI60/52 PI-PN HP1,5 Right SST
602495S	Drive unit RI60/52 PI-PN HP1,5 Left SST
602496D	Drive unit RI60/52 PI HP2 Right SST
602496S	Drive unit RI60/52 PI HP2 Left SST
602496D-316	Drive unit RI60/52 PI HP2 Right AISI 316
602496S-316	Drive unit RI60/52 PI HP2 Left AISI 316
GRUPPI TRAINO mod RI102 - disco Ø 74	
1022066D-20	Drive unit RI102 HP2 Right SST
1022066S-20	Drive unit RI102 HP2 Left SST
1022068D-20	Drive unit RI102 HP3 Right SST
1022068S-20	Drive unit RI102 HP3 Left SST
1022230D-20	Drive unit RI102 HP4 Right SST
1022230S-20	Drive unit RI102 HP4 Left SST
1022123	Drive unit RI102-2L HP3 SST
1022124	Drive unit RI102-2L HP4 SST
GRUPPI TRAINO mod RI102 - disco Ø 90	
1142530D	Drive unit RI114/102 HP3 B5 Right
1142530S	Drive unit RI114/102 HP3 B5 Left
1142531D	Drive unit RI114/102 HP4 B5 Right
1142531S	Drive unit RI114/102 HP4 B5 Left
1142532D	Drive unit RI114/102 HP3 B5 Right SST
1142532S	Drive unit RI114/102 HP3 B5 Left SST
1142533D	Drive unit RI114/102 HP4 B5 Right SST
1142533S	Drive unit RI114/102 HP4 B5 Left SST
GRUPPI TRAINO mod RI114	
1142210D	Drive unit RI114/14 HP3 Right SST
1142210S	Drive unit RI114/14 HP3 Left SST
1142211D	Drive unit RI114/14 HP4 Right SST
1142211S	Drive unit RI114/14 HP4 Left SST
1142382D	Drive unit RI114/14 HP3 painted Right
1142382S	Drive unit RI114/14 HP3 painted Left
1142383D	Drive unit RI114/14 HP4 painted Right
1142383S	Drive unit RI114/14 HP4 painted Left
GRUPPI TRAINO mod RI154	
1542670D	Drive unit RI154 HP3 Right SST
1542670S	Drive unit RI154 HP3 Left SST
1542672D	Drive unit RI154 HP4 Right SST
1542672S	Drive unit RI154 HP4 Left SST
1542777D	Drive unit RI154 HP5,5 painted Right
1542777S	Drive unit RI154 HP5,5 painted Left

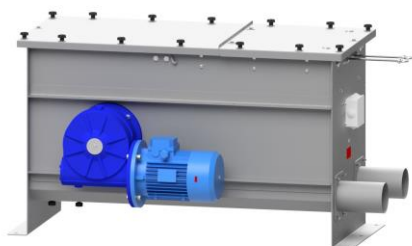
Covers for Drive Units



Code	MOTOR COVER
001121	Motor cover drive unit AN60
001122	Motor cover drive unit AN60 inox
1021121	Motor cover drive unit AN102/11-RI102-RI114
1021122	Motor cover drive unit AN102/11-RI102-RI114 SST
1541121	Motor cover drive unit RI154
1541122	Motor cover drive unit RI154 SST
FRONT COVER	
005310	Front cover drive unit AN60
006957	Front cover drive unit AN60 SST
1025943	Front cover drive unit AN102/11
1027643	Front cover drive unit AN102/11 SST
1025304	Front cover drive unit AN102/16



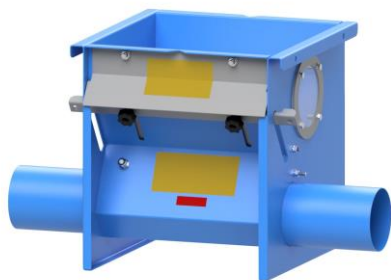
Drive Units model ED



Code	DRIVE UNITS model ED102
1022600D	Drive unit ED102 HP3 Right SST
1022600S	Drive unit ED102 HP3 Left SST
1022601D	Drive unit ED102 HP4 Right SST
1022601S	Drive unit ED102 HP4 Left SST
DRIVE UNITS model ED114	
1142600D	Drive unit ED114 HP3 Right SST
1142600S	Drive unit ED114 HP3 Left SST
DRIVE UNITS model ED114-102	
1142606D	Drive unit ED114-102 open bottom HP4 Right SST
1142606S	Drive unit ED114-102 open bottom HP4 Left SST
1142915D	Drive unit ED114-102 HP4 Right SST
1142915S	Drive unit ED114-102 HP4 Left SST
DRIVE UNITS model ED154	
1542600D	Drive unit ED154 HP3 Right SST
1542600S	Drive unit ED154 HP3 Left SST
1542601D	Drive unit ED154 HP4 Right SST
1542601S	Drive unit ED154 HP4 Left SST
1542602D	Drive unit ED154 HP5,5 Right SST
1542602S	Drive unit ED154 HP5,5 Left SST

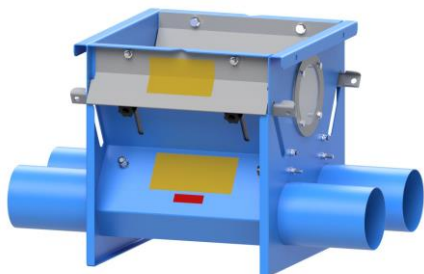
AN HOPPERS

One-way hoppers



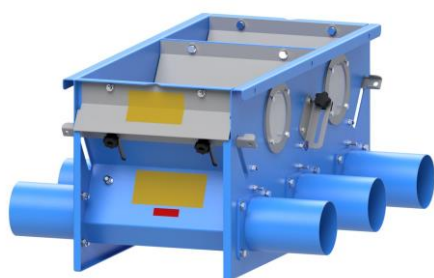
Code	ONE-WAY HOPPER mod. AN
601128	One-Way Hopper AN60 painted
602127	One-Way Hopper AN60 food-grade
601550	One-Way Hopper AN60 SST
6021271	One-Way Hopper AN60 SST food-grade
1021128	One-Way Hopper AN102 painted
1022675	One-Way Hopper AN102 food-grade
1021550	One-Way Hopper AN102 SST
10226751	One-Way Hopper AN102 SST food-grade
1141128	One-Way Hopper AN114 painted
1141550	One-Way Hopper AN114 SST
1541128	One-Way Hopper AN154 painted
1542773	One-Way Hopper AN154 SST

Two-ways hoppers



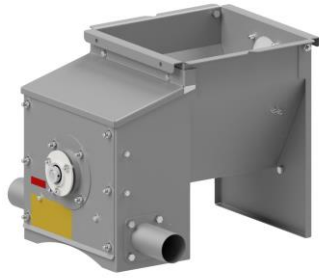
	TWO-WAYS HOPPER mod. AN
601102	Two-Ways Hopper 2AN60 painted
601551	Two-Ways Hopper 2AN60 SST
1021102	Two-Ways Hopper 2AN102 painted
1021551	Two-Ways Hopper 2AN102 SST
1141102	Two-Ways Hopper 2AN114 painted
1141551	Two-Ways Hopper 2AN114 SST
1541102	Two-Ways Hopper 2AN154 painted
1541102	Two-Ways Hopper 2AN154 SST

Three-ways hoppers

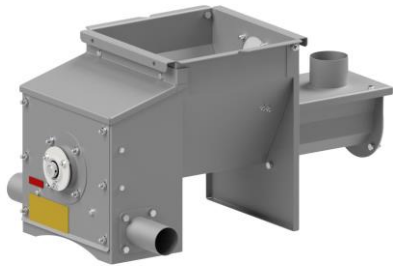


	THREE-WAYS HOPPER mod. AN
601123	Three-Ways Hopper 3AN60 painted
601253	Three-Ways Hopper 3AN60 SST
1021123	Three-Ways Hopper 3AN102 painted
1021253	Three-Ways Hopper 3AN102 SST
1141123	Three-Ways Hopper 3AN114 painted
1141253	Three-Ways Hopper 3AN114 SST
1542951	Three-Ways Hopper 3AN154 painted
1542952	Three-Ways Hopper 3AN154 SST
	CONNECTION SILO - THREE-WAYS HOPPERS
001789	Connection for silo adaptor
006364	Connection for silo adaptor SST

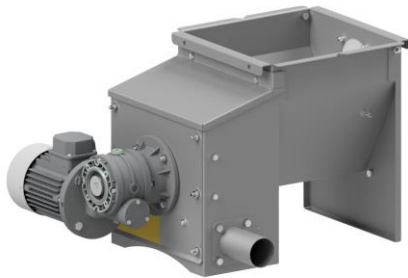
Hoppers with Extractor



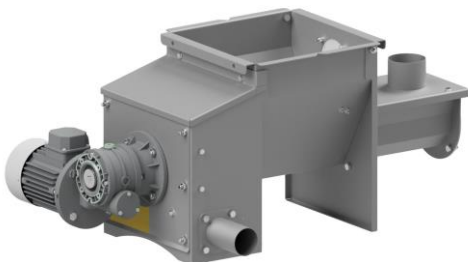
Code	HOPPERS WITH EXTRACTOR
601775	Hopper AN60 w/extractor SST



Code	HOPPERS WITH EXTRACTOR AND RECYCLE
602247	Hopper AN60 w/extractor and recycle SST



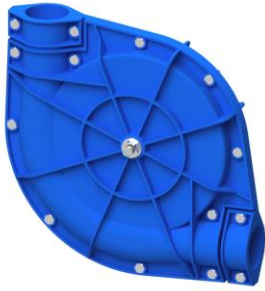
Code	MOTORIZED HOPPERS
601679	Motorized hopper AN60 SST
602507	Motorized hopper AN60/RMI70 SST
1021679	Motorized hopper AN102 SST
1141679	Motorized hopper AN114 SST



Code	MOTORIZED HOPPERS WITH RECYCLE
602248	Motorized hopper AN60 with recycle SST

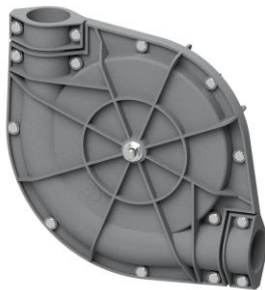
CORNERS

Corners with Nylon Housing



Code	90° CORNERS WITH NYLON HOUSING
601174	90° Corner P60/70
601377	90° Corner P60/70/VI - SST screws
601924	90° Corner P60/70/VI/PI - SST screws - SST pin
602476	90° Corner P60/70/PI/PG blue food-grade - Cast iron pulley
602477	90° Corner P60/70/PI/PN blue food-grade - Plastic pulley

Aluminum Corners with Internal Bushes



Code	90° CORNERS
601173	90° Corner A60/70
601173VI	90° Corner A60/70/VI - SST screws
602482	90° Corner A60/70/VI/PI/PG - SST pin - Cast iron pulley
602483	90° Corner A60/70/VI/PI/PN - SST pin - Plastic pulley
1022526CB	90° Corner A102/80 with bushes
1022526CBVI	90° Corner A102/80 with bushes - SST screws
1022528CB90	90° Corner A102/80/90/C52 with bushes - Ø 90mm disc
1022528CB90VI	90° Corner A102/80/90/C52 w/b - SST screws - Ø 90mm disc
1142526CB	90° Corner A114CB with bushes
1142526CBVI	90° Corner A114CB with bushes - SST screws
1541173	90° Corner A154/130
1541173VI	90° Corner A154/130 - SST screws



	135° CORNERS
601591	135° Corner A60/70
601591VI	135° Corner A60/70/VI - SST screws
602485	135° Corner A60/70/VI/PI/PG - SST pin - Cast iron pulley
602486	135° Corner A60/70/VI/PI/PN - SST pin - Plastic pulley
1021175CB	135° Corner A102/80 with bushes
1021175CBVI	135° Corner A102/80 with bushes - SST screws
1022769CB90	135° Corner A102/80/90/C52 with bushes - Ø 90mm disc
1022769CB90VI	135° Corner A102/80/90/C52 w/b - SST screws - Ø 90mm disc

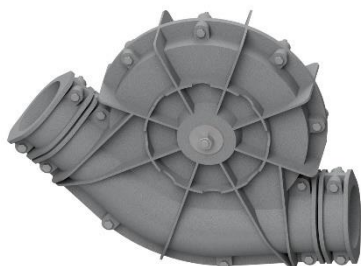


	360° CORNERS
601592	360° Corner A60/70
601592VI	360° Corner A60/70/VI - SST screws
602488	360° Corner A60/70/VI/PI/PG - SST pin - Cast iron pulley
602489	360° Corner A60/70/VI/PI/PN - SST pin - Plastic pulley
1021177CB	360° Corner A102/80 with bushes
1021177CBVI	360° Corner A102/80 with bushes - SST screws
1022544CB90	360° Corner A102/80/90/C52 with bushes - Cast iron pulley
1022544CB90VI	360° Corner A102/80/90/C52 w/b - SST screws - Ø 90mm disc
1141177	360° Corner A114 with bushes
1141177VI	360° Corner A114 with bushes - SST screws

Aluminum Corners with Internal Bearings



Code	90° CORNERS
1021173-19	90° Corner A102/80-19
1021173-19VI	90° Corner A102/80-19 - SST screws
1022527-52-90	90° Corner A102/80/90/C52 - Ø 90mm disc
1022527-52-90VI	90° Corner A102/80/90/C52 - SST screws - Ø 90mm disc
1141173	90° Corner A114
1141173VI	90° Corner A114 - SST screws



Code	135° CORNERS
1021175-19	135° Corner A102/80-19
1021175-19VI	135° Corner A102/80-19 - SST screws
1022768-52-90	135° Corner A102/80/90/C52 - Ø 90mm disc
1022768-52-90VI	135° Corner A102/80/90/C52 - SST screws - Ø 90mm disc

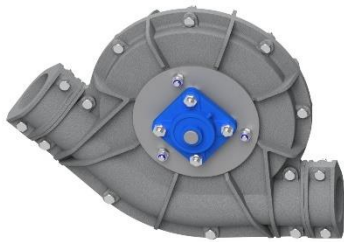


Code	360° CORNERS
1021177-19	360° Corner A102/80-19
1021177-19VI	360° Corner A102/80-19 - SST screws
1022544-52-90	360° Corner A102/80/90/C52 - Ø 90mm disc
1022544-52-90VI	360° Corner A102/80/90/C52 - SST screws - Ø 90mm disc
1142527	360° Corner A114
1142527VI	360° Corner A114 - SST screws

Aluminum Corners with External Bearings



90° CORNERS	
602065	90° Corner A60/CE15
1022402	90° Corner A102/CE
1142065	90° Corner A114/CE15

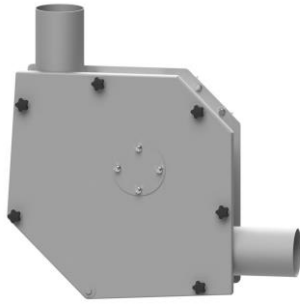


135° CORNERS	
602078	135° Corner A60/70CDE15
1022072	135° Corner A102/80CDE13

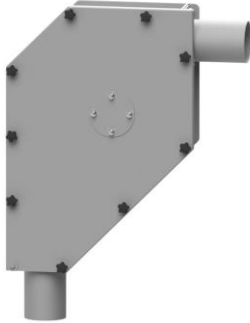


360° CORNERS	
602079	360° Corner A60/70CDE15
1022073	360° Corner A102/80CDE13
1142073	360° Corner A114DE

Corners with Internal Bushes model LI

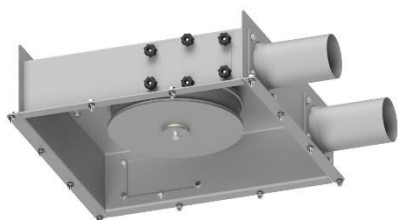
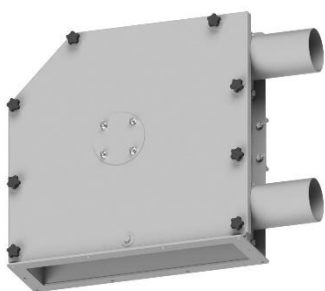


Code	90° CORNERS model LI - AISI 304
602089CB	90° Corner LIPI60CB SST with bushes
1022089CB	90° Corner LIPI102CB SST with bushes
1142308-102-CB	90° Corner LIPI114CB-102 SST with bushes - Ø 90mm disc
1142308CB	90° Corner LIPI114CB SST with bushes
1542589-CB	90° Corner LIPI154CB SST with bushes



Code	90° CORNERS model LI 2P - AISI 304 (possibly to be assembled at 135° moving inner flanged pipe)
602097D-CB	90° Corner LIPI60CB 2P SST Right with bushes
602097S-CB	90° Corner LIPI60CB 2P SST Left with bushes
1022098D-CB	90° Corner LIPI102CB 2P SST Right with bushes
1022098S-CB	90° Corner LIPI102CB 2P SST Left with bushes
1142312D-102-CB	90° Corner LIPI114CB-102 2P SST Right w/b - Ø 90mm disc
1142312S-102-CB	90° Corner LIPI114CB -102 2P SST Left w/b - Ø 90mm disc
1142312D-CB	90° Corner LIPI114CB 2P SST Right with bushes
1142312S-CB	90° Corner LIPI114CB 2P SST Left with bushes
90° CORNERS model LI VR - AISI 304	
602095D-CB	90° Corner LIPI60CB VR SST Right with bushes
602095S-CB	90° Corner LIPI60CB VR SST Left with bushes
1022095D-CB	90° Corner LIPI102CB VR SST Right with bushes
1022095S-CB	90° Corner LIPI102CB VR SST Left with bushes
1142310D-102-CB	90° Corner LIPI114CB-102 VR SST Right w/b - Ø 90mm disc
1142310S-102-CB	90° Corner LIPI114CB-102 VR SST Left w/b - Ø 90mm disc
1142310D-CB	90° Corner LIPI114CB VR SST Right with bushes
1142310S-CB	90° Corner LIPI114CB VR SST Left with bushes
1542310D-CB	90° Corner LIPI154CB VR SST Right with bushes
1542310S-CB	90° Corner LIPI154CB VR SST Left with bushes
135° CORNERS model LI - AISI 304	
1022117CB	135° Corner LIPI102CB SST with bushes
1142542-102-CB	135° Corner LIPI114CB-102 SST with bushes - Ø 90mm disc
1142542CB	135° Corner LIPI114CB SST with bushes
360° CORNERS model LI - AISI 304	
602428CB	360° Corner LIPI60CB SST with bushes
1022113CB	360° Corner LIPI102CB SST with bushes
1142314-102-CB	360° Corner LIPI114CB-102 SST with bushes - Ø 90mm disc
1142314CB	360° Corner LIPI114CB SST with bushes
1542590CB	360° Corner LIPI154CB SST with bushes

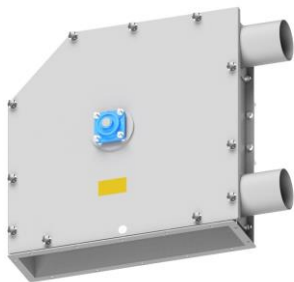
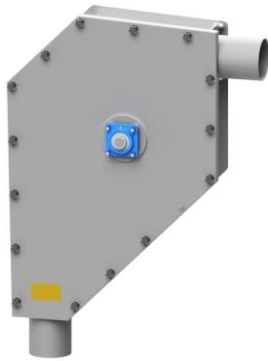
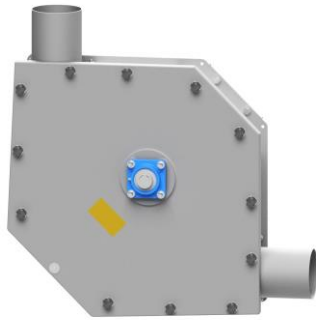
Discharge corners Model LI with conveyor



Code	360° VERTICAL DISCHARGE CORNERS mod. LI AISI 304
602432D	360° Corner vertical discharge LIPI60CB SST Right with bushes
602432S	360° Corner vertical discharge LIPI60CB SST Left with bushes
1022185D	360° Corner vertical discharge LIPI102CB SST Right with bushes
1022185S	360° Corner vertical discharge LIPI102CB SST Left with bushes
1142430D-102-CB	360° Corner vertical discharge LIPI114CB-102 SST Right - Ø 90mm
1142430S-102- CB	360° Corner vertical discharge LIPI114CB-102 SST Left - Ø 90mm
1142430D	360° Corner vertical discharge LIPI114CB SST Right with bushes
1142430S	360° Corner vertical discharge LIPI114CB SST Left with bushes
1542430D	360° Corner vertical discharge LIPI154CB SST Right with bushes
1542430S	360° Corner vertical discharge LIPI154CB SST Left with bushes
CONVEYOR 360° VERTICAL DISCHARGE CORNERS	
602781	Conveyor 360° corner vertical discharge LI60 SST
1022781	Conveyor 360° corner vertical discharge LI102 SST
1028660	Conveyor 360° corner vertical discharge LI102-154 SST
1142744	Conveyor 360° corner vertical discharge LI114 SST
1549067	Conveyor 360° corner vertical discharge LI154 SST

Code	360° HORIZONTAL DISCHARGE CORNERS mod. LI AISI 304
1022561CB	360° Corner LIPI102CB horizontal discharge SST with bushes
1142661CB	360° Corner LIPI114CB horizontal discharge SST with bushes
1542787-CN	360° Corner LIPI154CB horizontal discharge SST with bushes
CONVEYOR 360° HORIZONTAL DISCHARGE CORNERS	
609041	Conveyor 360° corner horizontal discharge LI60 SST
1022745	Conveyor 360° corner horizontal discharge LI102 SST
1142763	Conveyor 360° corner horizontal discharge LI114 SST
1549056	Conveyor 360° corner horizontal discharge LI154 SST

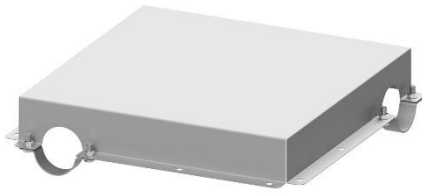
Corners with External Bearings model LI



Code	90° CORNERS model LI - AISI 304
602089	90° Corner LIPI60CE SST
1022089	90° Corner LIPI102CE SST
1142308-102	90° Corner LIPI114CE-102 SST
1142308	90° Corner LIPI114CE SST
1542589	90° Corner LIPI154CE SST
	90° CORNERS model LI 2P - AISI 304 (possibly to be assembled at 135° moving inner flanged pipe)
602097D	90° Corner LIPI60CE 2P SST Right
602097S	90° Corner LIPI60CE 2P SST Left
1022098D	90° Corner LIPI102CE 2P SST Right
1022098S	90° Corner LIPI102CE 2P SST Left
1142312D-102	90° Corner LIPI114CE-102 2P SST Right - Ø 90 mm disc
1142312S-102	90° Corner LIPI114CE -102 2P SST Left - Ø 90 mm disc
1142312D	90° Corner LIPI114CE 2P SST Right
1142312S	90° Corner LIPI114CE 2P SST Left
	90° CORNERS model LI VR - AISI 304
602095D	90° Corner LIPI60CE VR SST Right
602095S	90° Corner LIPI60CE VR SST Left
1022095D	90° Corner LIPI102CE VR SST Right
1022095S	90° Corner LIPI102CE VR SST Left
1142310D-102	90° Corner LIPI114CE-102 VR SST Right - Ø 90mm disc
1142310S-102	90° Corner LIPI114CE-102 VR SST Left - Ø 90 mm disc
1142310D	90° Corner LIPI114CE VR SST Right
1142310S	90° Corner LIPI114CE VR SST Left
1542310D	90° Corner LIPI154CE VR SST Right
1542310S	90° Corner LIPI154CE VR SST Left
	135° CORNERS model LI - AISI 304
1022117	135° Corner LIPI102CE SST
1142542-102	135° Corner LIPI114CE-102 SST
1142542	135° Corner LIPI114CE SST
	360° CORNERS model LI VR - AISI 304
602428	360° Corner LIPI60CE SST
1022113	360° Corner LIPI102CE SST
1142314	360° Corner LIPI114CE SST
1542590	360° Corner LIPI154CE SST

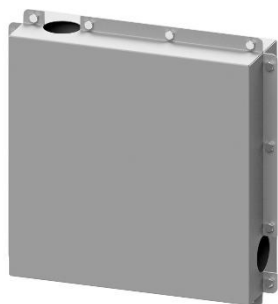
Code	360° VERTICAL DISCHARGE CORNERS model LI AISI 304
602432D	360° Corner with discharge LIPI60CE SST Right
602432S	360° Corner with discharge LIPI60CE SST Left
1022185D	360° Corner with discharge LIPI102CE SST Right
1022185S	360° Corner with discharge LIPI102CE SST Left
1142430D	360° Corner with discharge LIPI114CE SST Right
1142430S	360° Corner with discharge LIPI114CE SST Left
1542430D	360° Corner with discharge LIPI154CE SST Right
1542430S	360° Corner with discharge LIPI154CE SST Left

Single Cover



Code	SINGLE COVER 90° CORNER
602864	Single cover 90° Corner A60/70 galvanized
602779	Single cover 90° Corner A60/70 SST
1022053	Single cover 90° Corner 90° A102/80
1022662	Single cover 90° Corner LIPI102 galvanized
1142659	Single cover 90° Corner A114 galvanized
1142662	Single cover 90° Corner LIPI114 galvanized
1542882	Single cover 90° Corner A-LIPI154 galvanized
	SINGLE COVER 120° CORNER
1022664	Single cover 120° Corner LIPI102 galvanized
1142664	Single cover 120° Corner LIPI114 galvanized
1542932	Single cover 120° Corner LIPI154 galvanized
	SINGLE COVER 135° CORNER
602866I	Single cover 135° Corner A60/70 SST
602866	Single cover 135° Corner A60/70 galvanized
1022353	Single cover 135° Corner A102/80 galvanized
1022666	Single cover 135° Corner LIPI102 galvanized
1142666	Single cover 135° Corner LIPI114 galvanized
1542934	Single cover 135° Corner LIPI154 galvanized
	SINGLE COVER 360° CORNER
602868I	Single cover 360° Corner A60/70 SST
602868	Single cover 360° Corner A60/70 galvanized
1022141	Single cover 360° Corner A102/80 galvanized
1022668	Single cover 360° Corner LIPI102 galvanized
1022673	Single cover 360° Corner LIPI102 horizontal
1022674	Single cover 360° Corner LIPI102 vertical
1142701	Single cover 360° Corner LIPI114 galvanized
1142673	Single cover 360° Corner LIPI114 horizontal
1142674	Single cover 360° Corner LIPI114 vertical
1542936	Single cover 360° Corner LIPI154 galvanized
1542884	Single cover 360° Corner LIPI154 horizontal
1542909	Single cover 360° Corner LIPI154 vertical

Double Cover



Code	DOUBLE COVER 90° CORNER
602780	Double cover 90° Corner A60/70 SST
602865	Double cover 90° Corner A60/70 galvanized
1022054	Double cover 90° Corner A102/80
1022663	Double cover 90° Corner LIPI102 galvanized
1022670	Double cover 90° Corner LIPI102 VR galvanized
1022671	Double cover 90° Corner LIPI102 2P galvanized
1142663	Double cover 90° Corner LIPI114 galvanized
1142670	Double cover 90° Corner LIPI114 VR galvanized
1142671	Double cover 90° Corner LIPI114 2P galvanized
1142699	Double cover 90° Corner A114 galvanized
1542883	Double cover 90° Corner A-LIPI154 galvanized
	DOUBLE COVER 120° CORNER
1022665	Double cover 120° Corner LIPI102 galvanized
1142665	Double cover 120° Corner LIPI114 galvanized
1542933	Double cover 120° Corner LIPI154 galvanized
	DOUBLE COVER 135° CORNER
6028671	Double cover 135° Corner A60/70 inox
602867	Double cover 135° Corner A60/70 galvanized
1022667	Double cover 135° Corner LIPI102 galvanized
1022354	Double cover 135° Corner A102/80 galvanized
1142667	Double cover 135° Corner LIPI114 galvanized
1542935	Double cover 135° Corner LIPI154 galvanized
	DOUBLE COVER 360° CORNER
602869I	Double cover 360° Corner A60/70 SST
602869	Double cover 360° Corner A60/70 galvanized
1022142	Double cover 360° Corner A102/80 galvanized
1022669	Double cover 360° Corner LIPI102 galvanized
1142669	Double cover 360° Corner LIPI114 galvanized
1142702	Double cover 360° Corner A114 galvanized
1542937	Double cover 360° Corner LIPI154 galvanized

PIPING

FEEDING PIPES

Feeding Pipes



Code	FEEDING PIPES GALVANIZED
601161	Feeding pipe Ø 60
1021161	Feeding pipe Ø 102
1021602	Feeding pipe Ø 102x2
1141161	Feeding pipe Ø 114
1541161	Feeding pipe Ø 154
2001161	Feeding pipe Ø 200
FEEDING PIPES AISI 304	
601162	Feeding pipe Ø 60 SST
601162/2	Feeding pipe Ø 60x2 SST
1021162	Feeding pipe Ø 102x1,5 SST
1025550	Feeding pipe Ø 102x2 SST
1141162	Feeding pipe Ø 114 SST
1141162/2	Feeding pipe Ø 114x2 SST
1401162	Feeding pipe Ø 140 SST
1541162	Feeding pipe Ø 154 SST
2001162	Feeding pipe Ø 200 SST

COUPLERS FOR FEEDING PIPES

Couplers with Screws



Code	COUPLING JOINTS GALVANIZED
601375	Couplers for feeding pipes S60
1021375	Couplers for feeding pipes S102
1141375	Couplers for feeding pipes S114
COUPLING JOINTS AISI 304	
601158	Couplers for feeding pipes S60 SST
1021158	Couplers for feeding pipes S102 SST
1141158	Couplers for feeding pipes S114 SST

Couplers with Screws and Gaskets



Code	COUPLING JOINTS SP
602579	Coupling joint SP60X150
602329	Coupling joint SP60X150 SST
1022698	Coupling joint SP102X200
1022755	Coupling joint SP102X200 SST
1142698	Coupling joint SP114X200
1142775	Coupling joint SP114X200 SST
1402580	Coupling joint SP140X200 SST
1542579	Coupling joint SP154
1542580	Coupling joint SP154 SST
2002579	Coupling joint SP200
2002580	Coupling joint SP200 SST

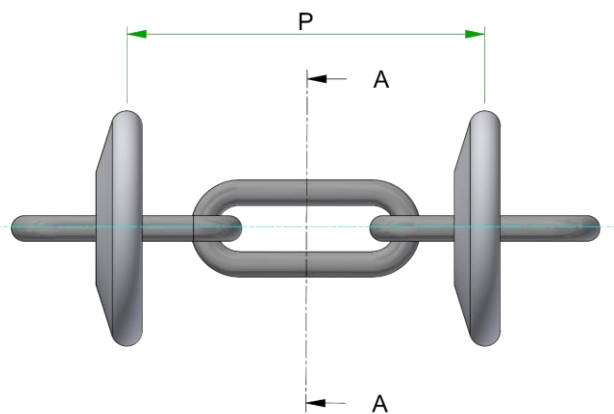
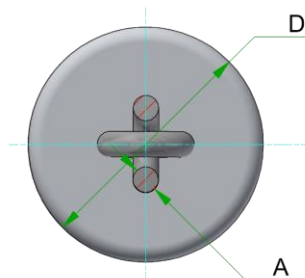
CONVEYOR CHAINS

Conveyor Chains



Code	CHAINS	D	P	A	CHAIN MATERIAL	DISCS MATERIAL
401164B4	Chain conveyor 40/50 strong	29	50	4,8	Hardened steel	Polypropylene
401164SOFT	Chain conveyor 40/50C soft	29	50	4,8	Hardened steel	Soft polypropylene
451164B4	Chain conveyor 45/50 strong	32	50	4,8	Hardened steel	Polypropylene
451164SOFT	Chain conveyor 45/50C soft	32	50	4,8	Hardened steel	Soft polypropylene
501164B4	Chain conveyor 50/50 strong	36,5	50	4,8	Hardened steel	Polypropylene
501164SOFT	Chain conveyor 50/50C soft	36,5	50	4,8	Hardened steel	Soft polypropylene
601164B4	Chain conveyor 60/70 strong	46	70	5	Hardened steel	Polypropylene
601164SOFT	Chain conveyor 60/70C soft	46	70	5	Hardened steel	Polypropylene
601169B4	Chain conveyor 60/70 strong nylon	46	70	5	Hardened steel	Nylon
602500B4	Chain conveyor 60/70/52 strong nylon	52	70	5	Hardened steel	Nylon
601167B4	Chain conveyor 60/70/6CN strong nylon 0 6 chain	46	70	5,9	Hardened steel	ATEX compound
602396B4	Chain conveyor 60/70 strong reinforced nylon	46	70	5	Hardened steel	Reinforced nylon
601202	Chain conveyor 60/70 SST nylon	46	70	5	AISI 304	Nylon
602501	Chain conveyor 60/70/52 SST nylon	52	70	5	AISI 304	Nylon
602397	Chain conveyor 60/70 SST food-grade nylon	46	70	5	AISI 304	Food-grade nylon
602654	Chain conveyor 60/70/52 SST food-grade nylon	52	70	5	AISI 304	Food-grade nylon
602366	Chain conveyor 60/70 SST moplen	46	70	5	AISI 304	Polypropylene
1021608B4	Chain conveyor C102/80 strong nylon	74	80	6,5	Hardened steel	Nylon
1022396B4	Chain conveyor C102/80 strong reinforced nylon	74	80	6,5	Hardened steel	Reinforced nylon
1022419B4	Chain conveyor C102/80 strong latiohm	74	80	6,5	Hardened steel	ATEX compound
1021609	Chain conveyor C102/80 SST nylon	74	80	6,5	AISI 304	Nylon
1022398	Chain conveyor C102/80 SST food-grade nylon	74	80	6,5	AISI 304	Food-grade nylon
1022418	Chain conveyor C102/80 SST latiohm	74	80	6,5	AISI 304	ATEX compound
1142400B4	Chain conveyor 114/90 strong nylon	90	90	6,5	Hardened steel	Nylon
1142756B4	Chain conveyor 114/90 strong reinforced nylon	90	90	6,5	Hardened steel	Reinforced nylon
1142424B4	Chain conveyor 114/90 strong latiohm	90	90	6,5	Hardened steel	ATEX compound
1142356	Chain conveyor 114/90 SST nylon	90	90	6,5	AISI 304	Nylon
1142444	Chain conveyor 114/90 SST food-grade nylon	90	90	6,5	AISI 304	Food-grade nylon
1542576B4	Chain conveyor 154/130 strong reinforced nylon	129	130	7,5	Hardened steel	Reinforced nylon
1542577	Chain conveyor 154/130 SST reinforced nylon	129	130	7,5	AISI 304	Reinforced nylon
1542444	Chain conveyor 154/130 SST food-grade nylon	129	130	7,5	AISI 304	Food-grade nylon
2002576B4	Chain conveyor 200/180 strong reinforced nylon	178	180	8,5	Hardened steel	Reinforced nylon
2002577	Chain conveyor 200/180 SST reinforced nylon	178	180	8,5	AISI 304	Reinforced nylon
2002444	Chain conveyor 200/180 SST food-grade nylon	178	180	8,5	AISI 304	Food-grade nylon

Sez. A-A



Chain Joints



Code	CHAIN JOINTS
401293	Joint for chain conveyors Ø 40/50C
451293	Joint for chain conveyors Ø 45/50C
451293-V	Joint for chain conveyors Ø 45/50C painted
501293	Joint for chain conveyors Ø 50/50C
601293	Joint for chain conveyors Ø 60/70
602480	Joint for chain conveyors Ø 60/70 food-grade painted
1021293-9	Joint for chain conveyors Ø 102/80/9C
1022480	Joint for chain conveyors Ø 102/80 food-grade painted
1022115	Joint for chain conveyors Ø 102/80 closed
1141293	Joint for chain conveyors Ø 114/90
1142480	Joint for chain conveyors Ø 114/90 food-grade painted
1142115	Joint for chain conveyors Ø 114/90 closed
1542480	Joint for chain conveyors Ø 154/130 food-grade painted
1542115	Joint for chain conveyors Ø 154/130 closed
2002480	Joint for chain conveyors Ø 154/130 food-grade painted
2002115	Joint for chain conveyors Ø 154/130 closed

DISCHARGES

DISCHARGE / LOAD SEGMENTS

Nylon Discharge Segments

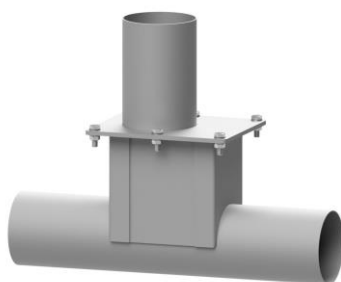


Code	NYLON DISCHARGE SEGMENTS
601799	Discharge segment P60/280/80 without shutter
601799AL	Discharge segment P60/280/80 without shutter food-grade

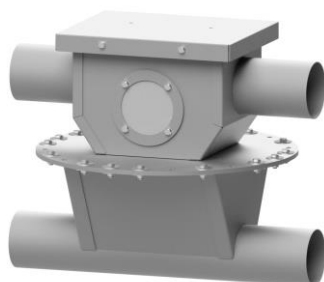
Steel Discharge Segments



Code	STEEL DISCHARGE SEGMENTS
602525-20	Discharge segment Ø 60 SST
1021191	Discharge segment Ø 102 with pipe
1021493	Discharge segment Ø 102 with pipe SST
1021493-154	Discharge segment Ø 102 flanged U-154 SST
1142381	Discharge segment Ø 114
1142315	Discharge segment Ø 114 SST
1142805	Discharge segment Ø 114 DN200 SST
1142905	Discharge segment Ø 114 rectangular SST
1541191	Discharge segment Ø 154
1542668	Discharge segment Ø 154 SST



Code	LOADING SEGMENTS
602008	Loading segment Ø 60
602805	Loading segment Ø 60 SST
1022008	Loading segment Ø 102
1022515	Loading segment Ø 102 SST
1142008	Loading segment Ø 114
1142515-102	Loading segment Ø 114
1542008	Loading segment Ø 154
1542515	Loading segment Ø 154 SST



Code	DISCHARGE - LOADING SEGMENTS
602919	Orientable discharge-loading segment Ø 60
602364	Loading-discharge segment Ø 60 SST
1022919	Orientable discharge-loading segment Ø 102
1022920	Orientable discharge-loading segment Ø 102 SST

NYLON DISCHARGES

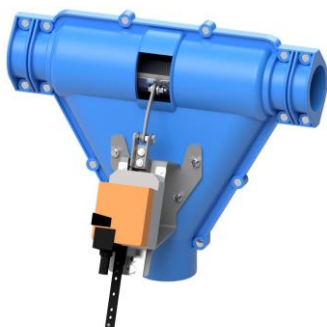
Discharges with Nylon Housing



Code	MANUAL DISCHARGE VALVE
601833	Manual discharge valve P60/280
601833AL	Manual discharge valve P60/280 food-grade



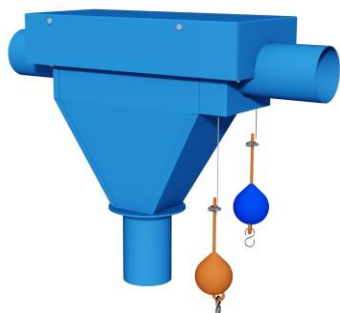
Code	PNEUMATIC DISCHARGE VALVE – standard cylinder
601747	Pneu. discharge valve PN280 w/cylinder plastic shutter
601748	Pneu. discharge valve PN60/280 without cylinder
601928	Pneu. discharge valve PN60/280 w/cylinder SST shutter
601929	Pneu. discharge valve PN280 without cylinder SST shutter
PNEUMATIC DISCHARGE VALVE – magnetic cylinder	
602377	Pneu. discharge valve PN60/280 UDE 20/100 plastic shutter
602376	Pneu. discharge valve PN60/280 UDE 20/100 SST shutter
602376AL	Pneu. discharge valve PN60/280 UDE w/c SST shut. food grade
ACCESSORIES	
007219	Magnetic sensor W FM100
008215	Sensor adaptor W FG054 for UDE Ø 20



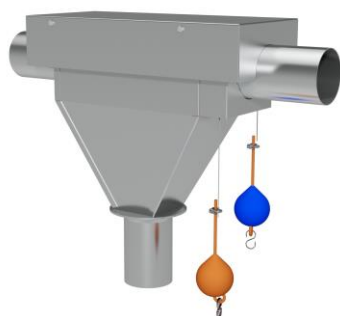
Code	ELECTRIC DISCHARGE VALVE - slow closing
601951	Electric discharge valve PN60/280 SST
601951A	Electric discharge valve PN60/280 220V

DISCHARGE VALVES

Discharge Valves with Steel Shutter



Code	PAINTED DISCHARGE VALVES
1021416	Manual discharge valve MA102 painted
1142305	Manual discharge valve MA114 painted
1549531	Manual discharge valve MA154 painted



Code	MANUAL DISCHARGE VALVES SST
608205	Manual discharge valve MA60 SST - outlet Ø 102
1021457	Manual discharge valve MA102 SST
1142306	Manual discharge valve MA114 SST
1542949	Manual discharge valve MA154 SST

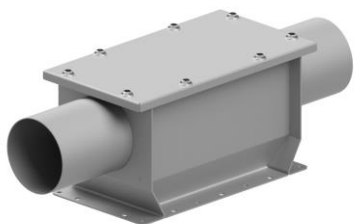


Code	PNEUMATIC DISCHARGE VALVES SST
602649	Pneumatic discharge valve PN60 SST
1022649	Pneumatic discharge valve PN102EP UDE180 SST
1142649	Pneumatic discharge valve PN114EP UDE200 SST
1542649	Pneumatic discharge valve PN154EP UDE 270 SST



Code	ELECTRIC DISCHARGE VALVES SST
602645	Electric discharge valve E60 SST
1022645	Electric discharge valve E102EP LINAK 180 SST
1142645	Electric discharge valve E114EP LINAK 200 SST
1542645	Electric discharge valve E114EP LINAK 270 SST

Guillotine Discharge Valves



Code	DISCHARGE SEGMENT
1022794	Discharge segment 0 102 for guillotine 102 SST
1142794	Discharge segment 0 114 for guillotine 114 SST
1402794	Discharge segment 0 140 for guillotine 0 140 SST
1542794	Discharge segment 0 154 for guillotine 0 154 SST



Code	SHUTTERS
002793	Pneumatic shutter with guillotine 102-114 SST
002792	Pneumatic shutter with guillotine 140-154 SST



Code	BOTTOM CONVEYORS
1142803	Conveyor shutter 102-114 GH PN U-154 SST
1542803	Bottom conveyor shutter 140-154 GH PN SST
90° BOTTOM CONVEYORS	
1142804	Conveyor shutter GH PN 30° DN250 SST
1542804	Bottom conveyor shutter GH PN 30° DN250 SST

Code	COVERS
1142675	Single cover pneumatic sliding valve PN114 galvanized
1542675	Single cover pneumatic shutter GH PN154 galvanized

Elevators

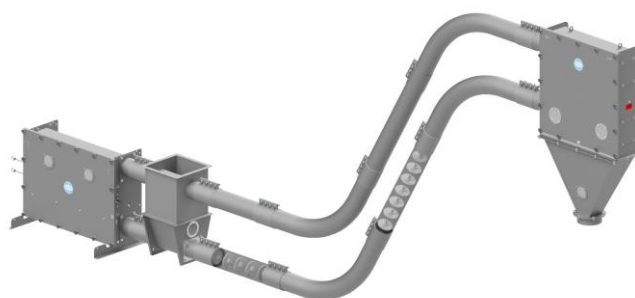


AL MODEL

Drive unit with separate tensioner, characterized by a simple and compact structure. The parallel pipes are positioned horizontally, with all components made of stainless steel.

FE MODEL

Drive unit with separate tensioner, characterized by a simple and compact structure. The parallel pipes are positioned vertically, with all components made of stainless steel.

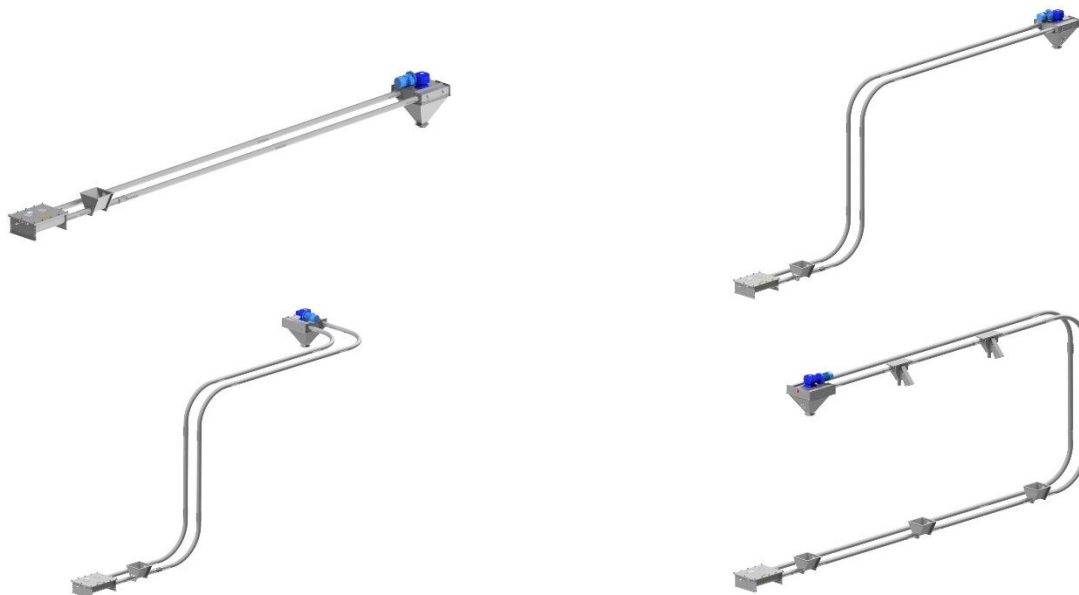


Model	Capacity	Length	Power
Ø	M3/h	Metri	Kw
60	4	150	1,5
102	8	140	3
114	12	120	4
154	30	100	5,5
200	40	75	5,5

Advantages:

- Parallel pipes to reduce overall dimensions.
- Ease of creating different types of layouts.
- Extremely low energy consumption.
- Very low maintenance costs thanks to minimal periodic interventions.
- Easy to clean.
- Available in ATEX versions and for food-grade applications.

Some Possible Configurations:

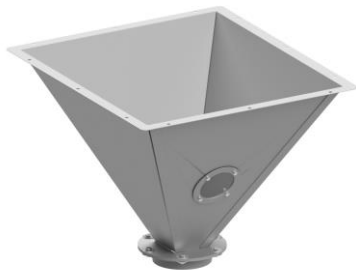


DRIVE UNITS AND CONVEYORS DRIVE UNIT

Drive Units model AL



Code	DRIVE UNITS model AL
602170	Drive unit AL60 HP2 SST
1142707	Drive unit AL114-102 HP2 SST
1142708	Drive unit AL114-102 HP3 SST
1402582	Drive unit AL154-140 HP3 SST
1402583	Drive unit AL154-140 HP4 SST
1542582	Drive unit AL154 HP3 SST
1542583	Drive unit AL154 HP4 SST
1542584	Drive unit AL154 HP5,5 SST
2002582	Drive unit AL200 HP3 SST
2002583	Drive unit AL200 HP4 SST
2002584	Drive unit AL200 HP5,5 SST

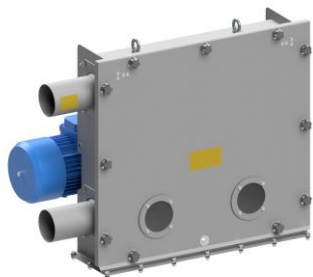


Code	CONVEYOR DRIVE UNIT model AL
609161	Conveyor drive unit AL60 SST
1149161	Conveyor drive unit AL114 SST
1549161	Conveyor drive unit AL154 SST
2009161	Conveyor drive unit AL200 SST

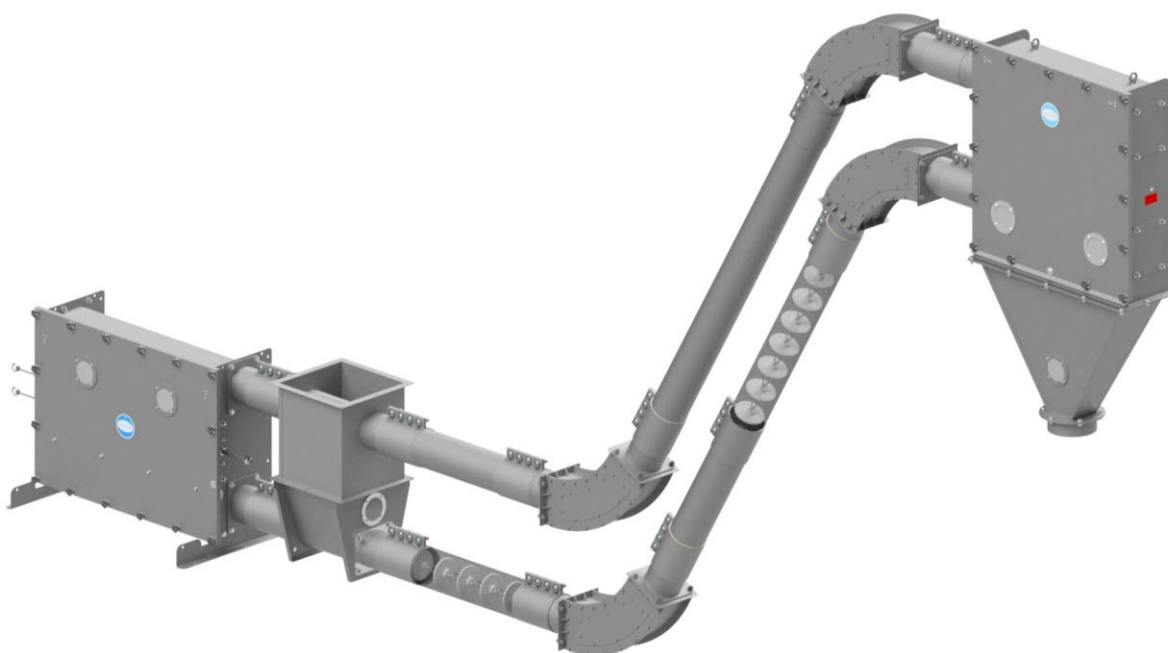
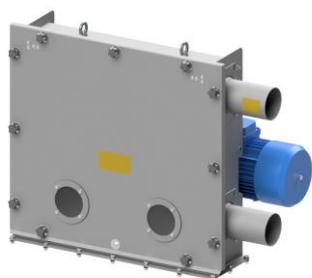


Drive Units model FE

LEFT MODEL



RIGHT MODEL

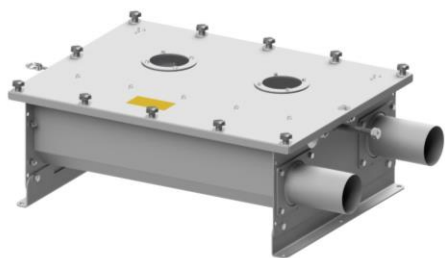


Code	DRIVE UNITS model FE
602764D	Drive unit FE60 HP2 SST Right
602764S	Drive unit FE60 HP2 SST Left
1142764D	Drive unit FE114-102 HP2 SST Right
1142764S	Drive unit FE114-102 HP2 SST Left
1142767D	Drive unit FE114-102 HP3 SST Right
1142767S	Drive unit FE114-102 HP3 SST Left
1402767D	Drive unit FE140 HP3 SST Right
1402767S	Drive unit FE140 HP3 SST Left
1402768D	Drive unit FE140 HP4 SST Right
1402768S	Drive unit FE140 HP4 SST Left
1542767D	Drive unit FE154 HP3 SST Right
1542767S	Drive unit FE154 HP3 SST Left
1542768D	Drive unit FE154 HP4 SST Right
1542768S	Drive unit FE154 HP4 SST Left
2002767D	Drive unit FE200 HP3 SST Right
2002767S	Drive unit FE200 HP3 SST Left
2002768D	Drive unit FE200 HP4 SST Right
2002768S	Drive unit FE200 HP4 SST Left
2002769D	Drive unit FE200 HP5,5 SST Right
2002769S	Drive unit FE200 HP5,5 SST Left

Code	CONVEYOR DRIVE UNIT model FE
608388	Conveyor drive unit FE60 SST
1149179	Conveyor drive unit FE114 SST
1408388	Conveyor drive unit FE140 SST
1548388	Conveyor drive unit FE154 SST
2008388	Conveyor drive unit FE200 SST

TENSIONER UNITS

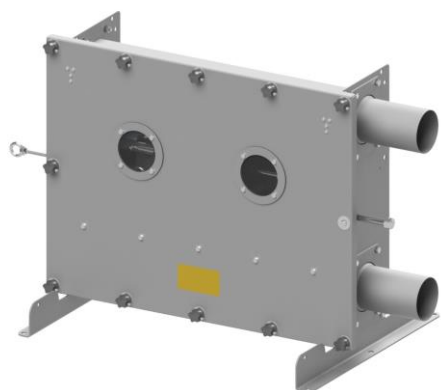
Tensioner unit AL model



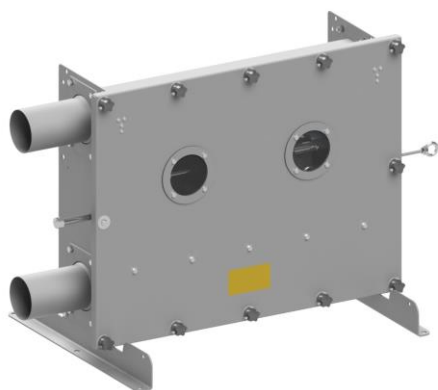
Code	TENSIONER UNIT AL
602709	Tensioner unit AL60 SST
1142709	Tensioner unit AL114-102 SST
1402588	Tensioner unit AL154-140 SST
1542588	Tensioner unit AL154 SST
2002588	Tensioner unit AL200 SST

Tensioner unit FE model

LEFT



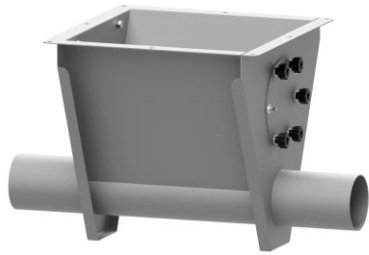
RIGHT



Code	TENSIONER UNIT FE
602765D	Tensioner unit FE60 SST Right
602765S	Tensioner unit FE60 SST Left
1142765D	Tensioner unit FE114-102 SST Right
1142765S	Tensioner unit FE114-102 SST Left
1402765D	Tensioner unit FE140 SST Right
1402765S	Tensioner unit FE140 SST Left
1542765D	Tensioner unit FE154 SST Right
1542765S	Tensioner unit FE154 SST Left
2002765D	Tensioner unit FE200 SST Right
2002765S	Tensioner unit FE200 SST Left

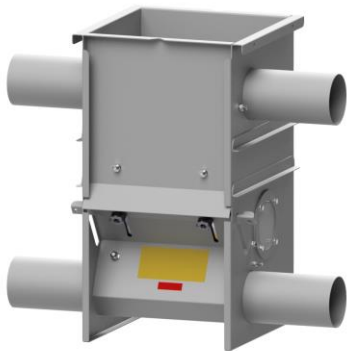
HOPPERS

Hoppers model AL



Code	AL HOPPERS
602941	Tandem hopper AL60 SST
1022941	Tandem hopper AL102 SST
1142941	Tandem hopper AL114 SST
1402941	Tandem hopper AL140 SST
1542941	Tandem hopper AL154 SST
2002941	Tandem hopper AL200 SST

Hoppers model FE



Code	FE HOPPERS
602766	Hopper FE60 SST
1022766	Hopper FE102 SST
1142766	Hopper FE114 SST
1402766	Hopper FE140 SST
1542766	Hopper FE154 SST
2002766	Hopper FE200 SST

BENDS

Bended pipes



Code	BENDED PIPES
451366	Bended pipe 30° 2 mt. galvanized
455299	Bended pipe 90° 1,2 mt. galvanized
601366	Bended pipe 30° 2 mt. galvanized
602059	Bended pipe 90° 1,5 mt. SST
605299	Bended pipe 90° 1,5 mt. galvanized
608361	Bended pipe 90° Rm800 Ø 60X2 AISI 304
1028360	Bended pipe 45° Rm400 Ø 102X2 AISI 304
1028361	Bended pipe 90° Rm150 Ø 102X2 AISI 304
1022965	Bended pipe 90° Rm800 Ø 102X2 AISI 304
1142902	Bended pipe 90° Rm150 Ø 114X2 AISI 304
1148360	Bended pipe 60° Rm230 Ø 114X2 AISI 304
1148361	Bended pipe 90° Rm800 Ø 114X2 AISI 304
1408361	Bended pipe 90° Rm500 Ø 140X2 AISI 304
1548360	Bended pipe 45° Rm500 Ø 154X2 AISI 304
1548361	Bended pipe 90° Rm500 Ø 154X2 AISI 304
2008360	Bended pipe 45° Rm1000 Ø 200X2 AISI 304
2008361	Bended pipe 90° Rm1000 Ø 200X2 AISI 304

Aluminum Bends



Code	ALUMINUM BEND 90°
602804	Fixed aluminum curve 90° A60
1022030	Fixed aluminum curve 90° A102
1142030	Fixed aluminum curve 90° A114

SST Bends



Code	SST BENDS 90°
602871	Bend 90° LI60 SST
1022871	Bend 90° LI102 SST
1142871	Bend 90° LI114 SST
1542871	Bend 90° LI154 SST
	SST BENDS 135°
602872	Bend 135° LI60 SST
1022872	Bend 135° LI102 SST
1142872	Bend 135° LI114 SST
1542872	Bend 135° LI154 SST

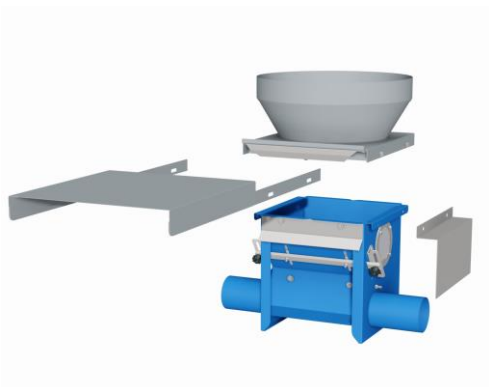
Accessories

SILO ADAPTORS

Silo Adaptors with Manual Shutter



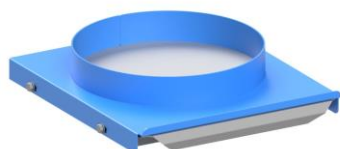
Code	SILO ADAPTORS WITH MANUAL SHUTTERS GALVANIZED
001335	Silo adaptor with 440
001359	Silo adaptor with 540
001360	Silo adaptor with 920
SILO ADAPTORS WITH MANUAL SHUTTERS SST	
001336	Silo adaptor with 440 SST
001552	Silo adaptor with 540 SST
001553	Silo adaptor with 920 SST



Code	MANUAL SILO ADAPTOR'S COVERS
005416	Cover for silo adaptor FA
005446	Cover door hopper AN



Code	CONES FOR SILO ADAPTORS
001857	Cone silo adaptor 406FA electric shutter
006009	Cone silo adaptor 440FA electric shutter
004586	Cone silo adaptor 440FA electric shutter SST
006149	Cone silo adaptor 530x420FA electric shutter
001876	Cone silo adaptor 654x560FA electric shutter



Code	FLANGE WITH MANUAL SHUTTER FOR SILO ADAPTOR'S CONE
006567	Flange silo adaptor

Silo Adaptors with Electric Shutter



Code	ELECTRIC SHUTTERS FOR SILO ADAPTOR'S CONES
002033	Electric shutter MO12 silo-hopper
002420	Electric shutter MO12 silo-hopper SST

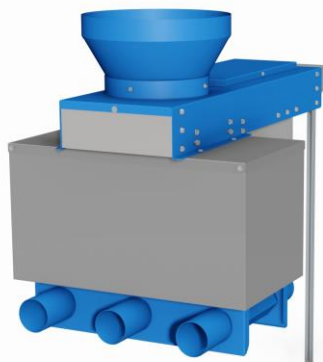
Accessories for Silo Adaptors with Electric Shutter



Code	CONES FOR SILO ADAPTORS
001857	Cone silo adaptor 406FA electric shutter
006009	Cone silo adaptor 440FA electric shutter
004586	Cone silo adaptor 440FA electric shutter SST
006149	Cone silo adaptor 530x420FA electric shutter
001876	Cone silo adaptor 654x560FA electric shutter



Code	ONE-WAY OR TWO-WAYS HOPPERS
002034	Cover for 1-2-ways hopper electric shutter MO12



	THREE-WAYS HOPPERS
002035	Cover for 3-ways hopper electric shutter MO12

CONTAINERS

Lightweight Series Containers



Code	CONTAINER WITH A CAPACITY OF 320 LITERS AN	Height	Section
001409	Container capacity of 320 liters	1050	810X810
001732	Container capacity of 320 liters SST	1050	810X810
001130	Container with legs capacity of 320 liters	1050	810X810
001756	Container with legs capacity of 320 liters SST	1050	810X810
002468	Container with legs capacity of 320 liters food-grade painted	1050	810X810

Lightweight Series Containers with modular height



Code	CONTAINER 540 LITERS AN – hopper connection flange	Height	Section
002203	Container capacity of 540 liters AN SST	1225	960X960
002417	Container capacity of 540 liters AN galvanized	1225	960X960
002202	Container capacity of 540 liters AN food-grade painted	1225	960X960
CONTAINER 540 LITERS GH – shutter connection flange			
002602	Container capacity of 540 liters GH SST	1225	960X960
002603	Container capacity of 540 liters GH galvanized	1225	960X960
002604	Container capacity of 540 liters GH food-grade painted	1225	960X960

Code	CONTAINER 950 LITERS AN – hopper connection flange	Height	Section
002469	Container capacity of 950 liters AN SST	1680	960x960
002606	Container capacity of 950 liters AN galvanized	1680	960x960
002607	Container capacity of 950 liters AN food-grade painted	1680	960x960
CONTAINER 950 LITERS GH – shutter connection flange			
002608	Container capacity of 950 liters GH SST	1680	960x960
002609	Container capacity of 950 liters GH galvanized	1680	960x960
002610	Container capacity of 950 liters GH food-grade painted	1680	960x960

Code	CONTAINER 1200 LITERS AN – hopper connection flange	Height	Section
001977	Container capacity of 1200 liters AN SST	1425	1420x1420
002612	Container capacity of 1200 liters AN galvanized	1425	1420x1420
002613	Container capacity of 1200 liters AN food-grade painted	1425	1420x1420
CONTAINER 1200 LITERS GH – shutter connection flange			
002439	Container capacity of 1200 liters GH SST - for slide valve	1425	1420x1420
002520	Container capacity of 1200 liters GH galvanized	1425	1420x1420
002611	Container capacity of 1200 liters GH food-grade painted	1425	1420x1420



Code	CONTAINER 1900 LITERS AN – hopper connection flange	Height	Section
002294	Container capacity of 1900 liters AN SST	1770	1420x1420
002614	Container capacity of 1900 liters AN galvanized	1770	1420x1420
002615	Container capacity of 1900 liters AN food-grade painted	1770	1420x1420
CONTAINER 1900 LITERS GH – shutter connection flange			
002437	Container capacity of 1900 liters GH SST - for slide valve	1770	1420x1420
002616	Container capacity of 1900 liters GH galvanized	1770	1420x1420
002617	Container capacity of 1900 liters GH food-grade painted	1770	1420x1420

Code	CONTAINER 2600 LITERS AN – hopper connection flange	Height	Section
002473	Container capacity of 2600 liters AN SST	2125	1420x1420
001421	Container capacity of 2600 liters AN galvanized	2125	1420x1420
002618	Container capacity of 2600 liters AN food-grade painted	2125	1420x1420
CONTAINER 2600 LITERS GH – shutter connection flange			
002619	Container capacity of 2600 liters GH SST - for slide valve	2125	1420x1420
002620	Container capacity of 2600 liters GH galvanized	2125	1420x1420
002622	Container capacity of 2600 liters GH food-grade painted	2125	1420x1420

Heavyweight containers with modular height



Code	CONTAINER 3000 LITERS AN – hopper AN connection flange	Height	Section
002445	Container capacity of 3000 liters AN SST	2940	1465x1465
002623	Container capacity of 3000 liters AN galvanized	2940	1465x1465
002624	Container capacity of 3000 liters AN food-grade painted	2940	1465x1465
	CONTAINER 3000 LITERS GH – shutters connection flange		
002625	Container capacity of 3000 liters GH SST	2940	1465x1465
002522	Container capacity of 3000 liters GH galvanized	2940	1465x1465
002627	Container capacity of 3000 liters GH food-grade painted	2940	1465x1465
	CONTAINER 3000 LITERS CE – hopper SP connection flange		
002445CE	Container capacity of 3000 liters CE SST	2940	1465x1465
002664CE	Container capacity of 3000 liters CE galvanized	2940	1465x1465
002470CE	Container capacity of 3000 liters CE food-grade painted	2940	1465x1465



Code	CONTAINER 4000 LITERS AN – hopper connection flange	Height	Section
002316	Container capacity of 4000 liters AN SST	3440	1465x1465
002629	Container capacity of 4000 liters AN galvanized	3440	1465x1465
002631	Container capacity of 4000 liters AN food-grade painted	3440	1465x1465
	CONTAINER 4000 LITERS GH – shutter connection flange		
002632	Container capacity of 4000 liters GH SST	3440	1465x1465
002633	Container capacity of 4000 liters GH galvanized	3440	1465x1465
002635	Container capacity of 4000 liters GH food-grade painted	3440	1465x1465
	CONTAINER 4000 LITERS CE – hopper connection flange		
002316CE	Container capacity of 4000 liters CE SST	3440	1465x1465
002471CE	Container capacity of 4000 liters CE galvanized	3440	1465x1465
002636CE	Container capacity of 4000 liters CE food-grade painted	3440	1465x1465

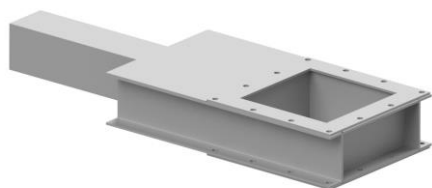
Code	CONTAINER 5000 LITERS AN – hopper connection flange	Height	Section
002442	Container capacity of 5000 liters AN SST	3950	1465x1465
002637	Container capacity of 5000 liters AN galvanized	3950	1465x1465
002639	Container capacity of 5000 liters AN food-grade painted	3950	1465x1465
	CONTAINER 5000 LITERS GH – shutter connection flange		
002640	Container capacity of 5000 liters GH SST	3950	1465x1465
002523	Container capacity of 5000 liters GH galvanized	3950	1465x1465
002642	Container capacity of 5000 liters GH food-grade painted	3950	1465x1465
	CONTAINER 5000 LITERS CE – hopper connection flange		
002442CE	Container capacity of 5000 liters CE SST	3950	1465x1465
002472CE	Container capacity of 5000 liters CE galvanized	3950	1465x1465
002643CE	Container capacity of 5000 liters CE food-grade painted	3950	1465x1465

Motorized Extraction Hoppers for CE Containers



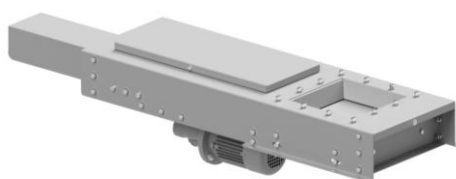
Code	TO LOAD Ø 60 CIRCUITS
1002156	Motorized hopper SP100-1500 food-grade
1002938	Motorized hopper SP100-1500 SST
	TO LOAD Ø 102 CIRCUITS
1252156	Motorized hopper SP125-1500 food-grade
1252286	Motorized hopper SP125-1500 SST
	TO LOAD Ø 114 CIRCUITS
1542711	Motorized hopper SP154-1500 food-grade
1542408	Motorized hopper SP154-1500 SST

Discharge Valves for GH containers



Code	DISCHARGE VALVES FOR CONTAINER GH
002940	Manual discharge valve GH SST square hole for GH containers/shutter
002939	Pneu. discharge valve GH SST square hole for GH containers/shutter
002555	Elect. discharge valve MO12 SST square hole for GH containers/shutter

Discharge valve for MO12 containers



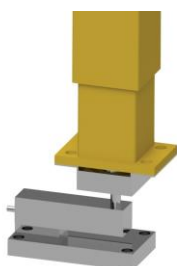
Code	DISCHARGE VALVES FOR CONTAINER MO12
002555	Elect. discharge valve MO12 SST square hole for GH containers/shutter
002548	Electric discharge valve MO12 square hole

Big bag Unloaders



Code	BIG BAG UNLOADERS
	Big bag unloaders available in different models and sizes

Load Cells



Code	LOAD CELLS
	Load cells available in different models and sizes

CLEANING SOLUTIONS

Brushes



Code	BRUSHES
008401	Brush for Ø 60 chain Ø 22x57,6
008403	Brush for Ø 102 chain Ø 28x98,6
009228	Brush for Ø 114 chain Ø 27,9x111,3

Cleaning station



	HORIZONTAL CLEANING STATION WITH 2 BRUSHES
602510	Cleaning station horizontal 2 brushes Ø 60 KW0,22 SST
1022510	Cleaning station horizontal 2 brushes Ø 102 KW0,22 SST
1142510	Cleaning station horizontal 2 brushes Ø 114 KW0,22 SST
1402510	Cleaning station horizontal 2 brushes Ø 140 KW0,22 SST
1542510	Cleaning station horizontal 2 brushes Ø 154 KW0,22 SST
009093	Conveyor for cleaning station
	VERTICAL CLEANING STATION WITH 2 BRUSHES
602860	Cleaning station vertical 2 brushes Ø 60 HP0,5 SST
1022860	Cleaning station vertical 2 brushes Ø 102 KW0,37 SST
1142860	Cleaning station vertical 2 brushes Ø 114 KW0,37 SST
1402860	Motorized vertical brush station Ø 140 2X0,37KW SST
1542860	Cleaning station vertical 2 brushes Ø 154 KW0,37 SST
	AIR CLEANING STATION
602942	Air cleaning station AL60 SST
1022942	Air cleaning station AL102 SST
1142942	Air cleaning station AL114 SST
1402942	Air cleaning station AL140 SST
1542942	Air cleaning station AL154 SST

SENSORS

Sensors



Code	SENSORS
001156	Level indicator
001157	Level indicator with timer

STANDS

Wall Brackets



Code	GALVANIZED WALL BRACKET
001390	Wall bracket 300
001391	Wall bracket 600
001392	Wall bracket 1000
001767	Wall bracket 1200
001716	Wall bracket 1500
SST WALL BRACKET	
001390I	Wall bracket 300 SST
001391I	Wall bracket 600 SST
001392I	Wall bracket 1000 SST

Telescopic Pipe Stands



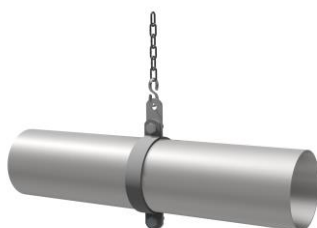
Code	GALVANIZED TELESCOPIC PIPE STANDS
601393	Telescopic pipe stand MP60x600
601771	Telescopic pipe stand MP60x1200
1021393	Telescopic pipe stand MP102x600
1021771	Telescopic pipe stand MP102x1200
1141393	Telescopic pipe stand MP114x600
1141771	Telescopic pipe stand MP114x1200
TELESCOPIC PIPE STANDS AISI 304	
601393I	Telescopic pipe stand MP60x600 SST
601771I	Telescopic pipe stand MP60x1200 SST
1021393I	Telescopic pipe stand MP102x600 SST
1021771I	Telescopic pipe stand MP102x1200 SST
1141393I	Telescopic pipe stand MP114x600 SST
1141771I	Telescopic pipe stand MP114x1200 SST

Two-holes Clamps



Code	GALVANIZED CLAMPS
603839	Clamp Ø 60x3
1023894	Clamp Ø 102x3
1142705	Clamp Ø 114x3
1542705	Clamp Ø 154x3
CLAMPS AISI 304	
605333	Clamp Ø 60x2 SST
1025333	Clamp Ø 102x2 SST
1145333	Clamp Ø 114x2 SST
1148443	Clamp Ø 114x2,5 SST
1545333	Clamp Ø 154x2 SST

Three-holes Clamps



Code	GALVANIZED CLAMPS
605340	Clamp Ø 60x3-3F
1025340	Clamp Ø 102x3-3F
1145340	Clamp Ø 114x3-3F
CLAMPS AISI 304	
605340I	Clamp Ø 60x3-3F SST
1025340I	Clamp Ø 102x3-3F SST
1145340I	Clamp Ø 114x3-3F SST